

Nit Updown Pendant 2x35W

2x2905Lm / 2700K
IP40 / CRI ≥ 80 / 120°

HER
Light Lovers.

F4A
estructure structure



DESCRIPCIÓN DESCRIPTION

Luminaria colgante de luz directa e indirecta para completar la familia NIT DOWN.

Suspended luminaire with a direct-indirect lighting to complete NIT DOWN range.

REFERENCIAS REFERENCES

F4A	2700K	2x2905Lm	166Lm/W
-----	-------	----------	---------

GENERAL

negro black blanco white
customizable custom

estructure structure

IP40

IK35

APARATO DE ILUMINACIÓN LIGHTING FIXTURE

120°

IRC ≥ 80 CRI ≥ 80

IP40

MacAdam ≤ 3

UGR N/D

difusor transparente

clear diffuser

valores de potencia del sistema (LED + driver): 2x35W

power values of the system (LED + driver): 2x35W

ACCESORIOS ACCESSORIES

B6 Kit de emergencia 1h

B6 emergency kit 1h

C1 Cables de 4m

C1 4m cables

ELÉCTRICA ELECTRICAL

2x35W

220-240VAC 50/60Hz

equipo integrado

integrated gear

MEDIDAS MEASURES

1170mm x 43,8mm

altura: 102mm

height: 102mm

REGULACIÓN DIMMING

on / off

1-10V (consult.)

pulsador

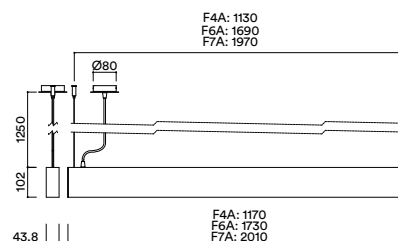
push

DALI

INSTALACIÓN INSTALLATION

suspensión

suspension

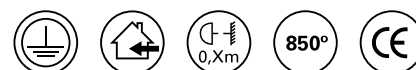


H(m)	D(cm)	Lux
3	805	115
2	537	260
1	268	1039

3000K 120°

H(m)	D(cm)	Lux
1	268	1039
2	537	260
3	805	115

3000K 120°



cambio sin previo aviso change without notice

Nit Updown Pendant 2x36W

2x2735Lm~2x2940Lm / 3000K~4000K

IP40 / CRI ≥ 80 / 120°

HER
Light Lovers.

F4A
estructure structure



DESCRIPCIÓN DESCRIPTION

Luminaria colgante de luz directa e indirecta para completar la familia NIT DOWN.

Suspended luminaire with a direct-indirect lighting to complete NIT DOWN range.

REFERENCIAS REFERENCES

F4A/30	3000K	2x2735Lm	151,9Lm/W
F4A/40	4000K	2x2940Lm	163,3Lm/W

GENERAL

negro black blanco white
customizable custom

estructure structure

IP40

IK35

ELÉCTRICA ELECTRICAL

2x36W

220-240VAC 50/60Hz

equipo integrado

integrated gear

APARATO DE ILUMINACIÓN LIGHTING FIXTURE

120°

IRC ≥ 80 CRI ≥ 80

IP40

MacAdam ≤ 3

UGR N/D

difusor transparente

clear diffuser

valores de potencia del sistema (LED + driver): 2x35W

power values of the system (LED + driver): 2x35W

MEDIDAS MEASURES

1170mm x 43,8mm

altura: 102mm

height: 102mm

REGULACIÓN DIMMING

on / off

1-10V (consult.)

pulsador

push

DALI

INSTALACIÓN INSTALLATION

suspensión

suspension

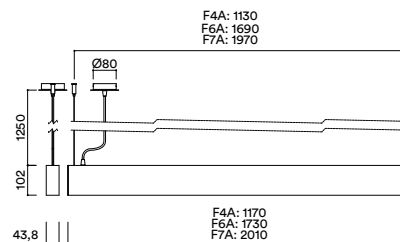
ACCESORIOS ACCESSORIES

B6 Kit de emergencia 1h

B6 emergency kit 1h

C1 Cables de 4m

C1 4m cables



H(m)	D(cm)	Lux
3	805	115
2	537	260
1	268	1039

3000K 120°

H(m)	D(cm)	Lux
1	268	1039
2	537	260
3	805	115

3000K 120°



cambio sin previo aviso change without notice

Nit Updown Pendant 2x53W

2x4355Lm / 2700K
IP40 / CRI ≥ 80 / 120°

HER
Light Lovers.

F6A
estructure structure



DESCRIPCIÓN DESCRIPTION

Luminaria colgante de luz directa e indirecta para completar la familia NIT DOWN.

Suspended luminaire with a direct-indirect lighting to complete NIT DOWN range.

REFERENCIAS REFERENCES

F6A 2700K 2x4355Lm 164,3Lm/W

GENERAL

negro black blanco white
customizable custom

estructure structure

IP40

IK36

APARATO DE ILUMINACIÓN LIGHTING FIXTURE

120°

IRC ≥ 80 CRI ≥ 80

IP40

MacAdam ≤ 3

UGR N/D

difusor transparente

clear diffuser

valores de potencia del sistema (LED + driver): 2x53W

power values of the system (LED + driver): 2x53W

ACCESORIOS ACCESSORIES

B6 Kit de emergencia 1h

B6 emergency kit 1h

C1 Cables de 4m

C1 4m cables

ELÉCTRICA ELECTRICAL

2x53W

220-240VAC 50/60Hz

equipo integrado

integrated gear

MEDIDAS MEASURES

1730mm x 43,8mm

altura: 102mm

height: 102mm

REGULACIÓN DIMMING

on / off

1-10V (consult.)

pulsador

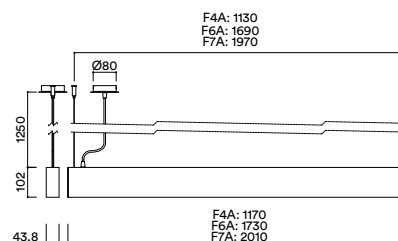
push

DALI

INSTALACIÓN INSTALLATION

suspensión

suspension

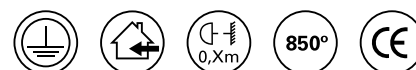


H(m)	D(cm)	Lux
3	805	173
2	537	390
1	268	1559

3000K 120°

H(m)	D(cm)	Lux
1	268	1559
2	537	390
3	805	173

3000K 120°



cambio sin previo aviso change without notice

Nit Updown Pendant 2x55W

2x4105Lm~2x4410Lm / 3000K~4000K

IP40 / CRI ≥ 80 / 120°

HER
Light Lovers.

F6A
estructure structure



DESCRIPCIÓN DESCRIPTION

Luminaria colgante de luz directa e indirecta para completar la familia NIT DOWN.

Suspended luminaire with a direct-indirect lighting to complete NIT DOWN range.

REFERENCIAS REFERENCES

Model	Color Temperature	Light Output	Power
F6A/30	3000K	2x4105Lm	149,3Lm/W
F6A/40	4000K	2x4410Lm	160,4Lm/W

GENERAL

negro black blanco white
customizable custom

estructure structure

IP40

IK36

APARATO DE ILUMINACIÓN LIGHTING FIXTURE

120°

IRC ≥ 80 CRI ≥ 80

IP40

MacAdam ≤ 3

UGR N/D

difusor transparente

clear diffuser

valores de potencia del sistema (LED + driver): 2x53W

power values of the system (LED + driver): 2x53W

ACCESORIOS ACCESSORIES

B6 Kit de emergencia 1h

B6 emergency kit 1h

C1 Cables de 4m

C1 4m cables

ELÉCTRICA ELECTRICAL

2x55W

220-240VAC 50/60Hz

equipo integrado

integrated gear

MEDIDAS MEASURES

1730mm x 43,8mm

altura: 102mm

height: 102mm

REGULACIÓN DIMMING

on / off

1-10V (consult.)

pulsador

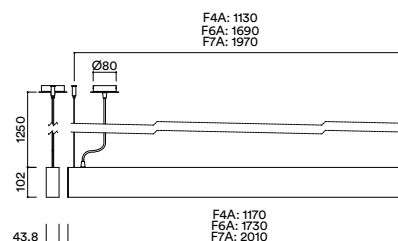
push

DALI

INSTALACIÓN INSTALLATION

suspensión

suspension



H(m)	D(cm)	Lux
3	805	173
2	537	390
1	268	1559

3000K 120°

H(m)	D(cm)	Lux
1	268	1559
2	537	390
3	805	173

3000K 120°



cambio sin previo aviso change without notice

Nit Updown Pendant 2x62W

2x5080Lm / 2700K
IP40 / CRI ≥ 80 / 120°

HER
Light Lovers.

F7A
estructure structure



DESCRIPCIÓN DESCRIPTION

Luminaria colgante de luz directa e indirecta para completar la familia NIT DOWN.

Suspended luminaire with a direct-indirect lighting to complete NIT DOWN range.

REFERENCIAS REFERENCES

F7A	2700K	2x5080Lm	163,9Lm/W
-----	-------	----------	-----------

GENERAL

negro black blanco white
customizable custom

estructure structure

IP40

IK37

APARATO DE ILUMINACIÓN LIGHTING FIXTURE

120°

IRC ≥ 80 CRI ≥ 80

IP40

MacAdam ≤ 3

UGR N/D

difusor transparente

clear diffuser

valores de potencia del sistema (LED + driver): 2x62W

power values of the system (LED + driver): 2x62W

ACCESORIOS ACCESSORIES

B6 Kit de emergencia 1h

B6 emergency kit 1h

C1 Cables de 4m

C1 4m cables

ELÉCTRICA ELECTRICAL

2x62W

220-240VAC 50/60Hz

equipo integrado

integrated gear

MEDIDAS MEASURES

2010mm x 43,8mm

altura: 102mm

height: 102mm

REGULACIÓN DIMMING

on / off

1-10V (consult.)

pulsador

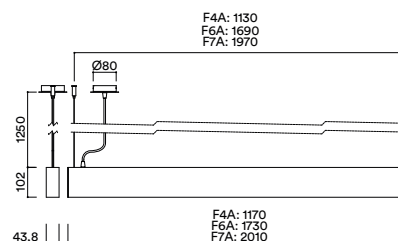
push

DALI

INSTALACIÓN INSTALLATION

suspensión

suspension

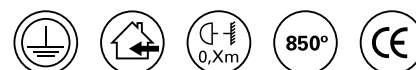


H(m)	D(cm)	Lux
3	805	202
2	537	455
1	268	1820

3000K 120°

H(m)	D(cm)	Lux
3	268	1820
2	537	455
1	805	202

3000K 120°



cambio sin previo aviso change without notice

Nit Updown Pendant 2x65W

2x4790Lm~2x5150Lm / 3000K~4000K

IP40 / CRI ≥ 80 / 120°

HER
Light Lovers.

F7A
estructure structure



DESCRIPCIÓN DESCRIPTION

Luminaria colgante de luz directa e indirecta para completar la familia NIT DOWN.

Suspended luminaire with a direct-indirect lighting to complete NIT DOWN range.

REFERENCIAS REFERENCES

F7A/30	3000K	2x4790Lm	147,4Lm/W
F7A/40	4000K	2x5150Lm	158,5Lm/W

GENERAL

negro black blanco white
customizable custom

estructure structure

IP40

IK37

APARATO DE ILUMINACIÓN LIGHTING FIXTURE

120°

IRC ≥ 80 CRI ≥ 80

IP40

MacAdam ≤ 3

UGR N/D

difusor transparente

clear diffuser

valores de potencia del sistema (LED + driver): 2x62W

power values of the system (LED + driver): 2x62W

ACCESORIOS ACCESSORIES

B6 Kit de emergencia 1h

B6 emergency kit 1h

C1 Cables de 4m

C1 4m cables

ELÉCTRICA ELECTRICAL

2x65W

220-240VAC 50/60Hz

equipo integrado

integrated gear

MEDIDAS MEASURES

2010mm x 43,8mm

altura: 102mm

height: 102mm

REGULACIÓN DIMMING

on / off

1-10V (consult.)

pulsador

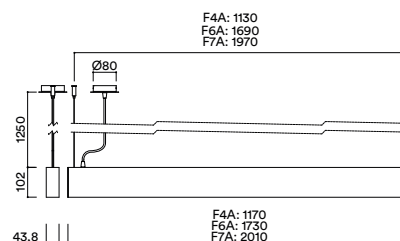
push

DALI

INSTALACIÓN INSTALLATION

suspensión

suspension



H(m)	D(cm)	Lux
3	805	202
2	537	455
1	268	1820

3000K 120°

H(m)	D(cm)	Lux
3	268	1820
2	537	455
1	805	202

3000K 120°



cambio sin previo aviso change without notice